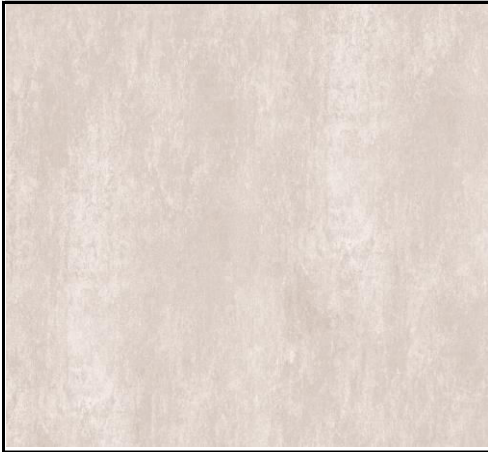


Cemento Collection - Crema



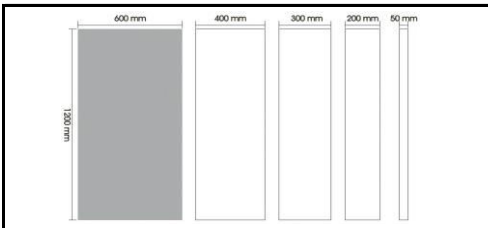
Tile size: 1200*600*4.8mm

SQM / PC 0.72

Weight / PC 8kg

Weight / SQM 11kg

Available sizes



** not all featured formats are available in the colours indicated. Please consult porcel-thin®.*

Descriptive Colour	Light Cream / V2
Finish	Structured
Product Code	D01
Applications	Residential / Commercial
Light Reflectance Value	60
Slip Resistance Value	Dry-PTV61 / Wet-PTV41

Physical properties

Test	Standard	Requirement	Typical test value
Length/Width	ISO 10545-2	±0.5%≤±2mm	±0.4%
Straightness of Sides	ISO 10545-2	±0.3%≤±1.5mm	±0.2%
Rectangularity	ISO 10545-2	±0.5%≤±2mm	±0.2%
Water Absorption	ISO 10545-3	≤0.5%	≤0.1%
Modulus of Rupture	ISO 10545-4	35 N/mm ²	49.8 N/mm ²
Breaking Strength	ISO 10545-4	700N	850N
Thermal shock resistance	ISO 10545-9	Required	Resistant
Chemical Resistance	ISO 10545-13	Min Class B	Class A
Stain Resistance	ISO 10545-14	Min Class 3	Class 5
UV Colour Resistance	/	/	Unaffected by light

Advantage

<p>Scratch Resistant Special surface; resistant to topical and deeper scratches; retains high surface quality even when cleaned frequently</p>	<p>No Color Variation Ceramic character resists against sun radiations; high color-stability even under extreme weather conditions</p>
<p>Heat Resistant Fire and heat resistant; no toxins released in the case of fire</p>	<p>Sanitary Surface Food-contact safe; non-solvent and zero-release</p>
<p>Chemical Resistant Resistant to organic and non-organic solvents, sanitizers and detergents; easy to clean; surface and deco-colors do not wash off</p>	<p>Versatile Could be combined with other building/decorating materials; could be cut into any size to satisfy any design</p>
<p>Environmentally Friendly Manufactured from natural materials; does not release toxin into the environment; efficient use of energy and materials</p>	<p>Convenient For The Renovation Porcelain panel is convenient for the renovation of old buildings and houses.</p>
<p>Low Water Absorption Extremely low water absorption rate makes slim water and frost resistant</p>	<p>Easy Cutting Simpler, more imposing and more elegant. Free design, application and cutting as you please. Free matching and free cutting like the cutout of clothing.</p>

www.porcel-thin.com / info@porcel-thin.com

The colour shown on the tile product in this data sheet is as accurate as the limitations of the printing process will allow. Due to the manufacturing process of all floor tiles there may be small variations in slip resistance. The slip resistance values provided are correct at the time of testing and represent the standard production value. The pendulum test results have been displayed in line with the Health and Safety Executive guidelines whereby 0-24 represents a high slip potential, 25-35 signifies a moderate slip potential and 36+ represents a low slip potential. Porcel-Thin® is a division of Far Eastern European Trading Co., Ltd, Unit 17 Rotherhithe Business Estate, 214 Rotherhithe New Road, London SE16 3EH, Registered in England number 5004756. All rights reserved.